

## INSTALLATION INSTRUCTIONS

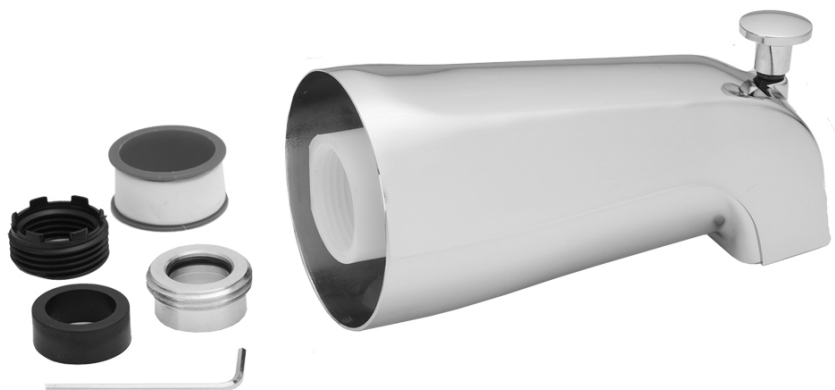
### 1/2" Copper/PEX/IPS Nose/IPS Base Tub Spouts

Part #: 3006, 3011

**JACLO®**  
Confidence from start to finish.®



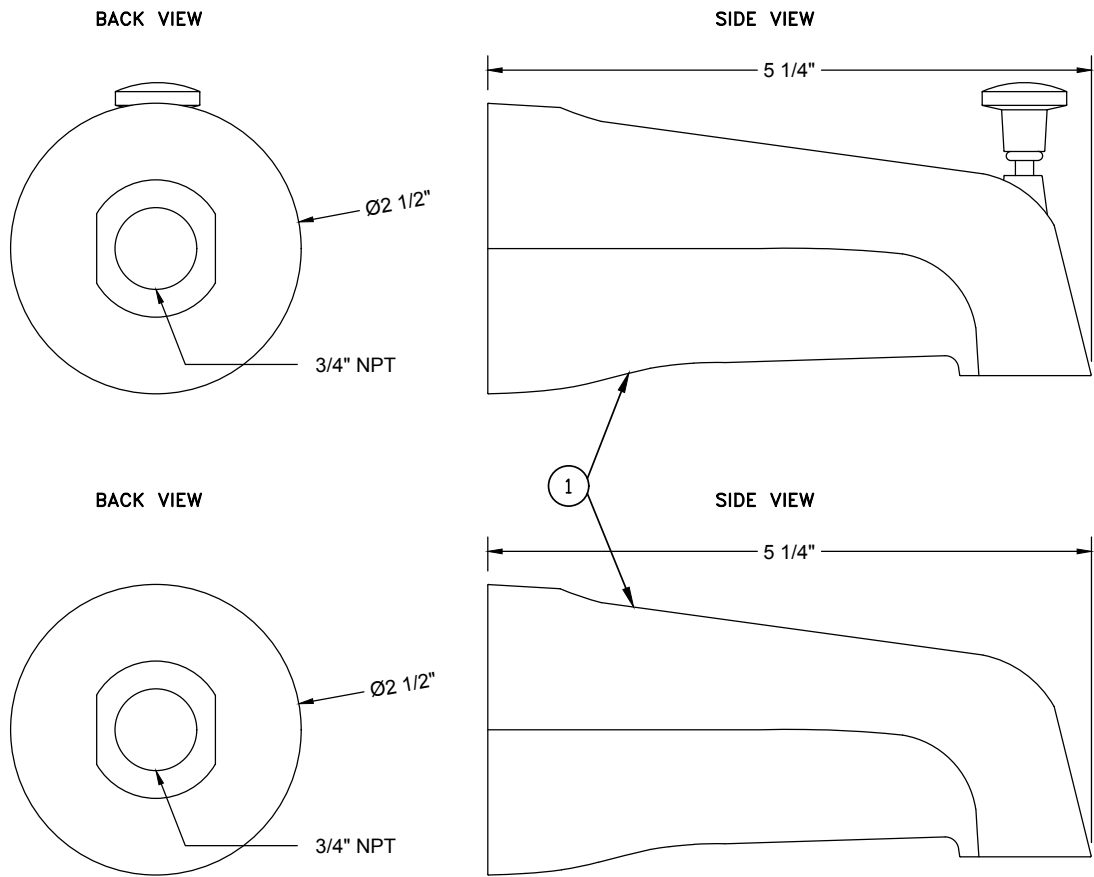
3006



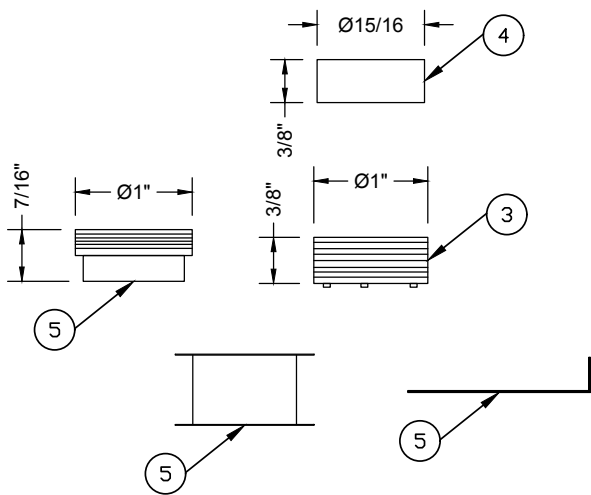
3011

**\*\*NOTE:** If diverting tub spout ensure twin ell is installed prior, if required by valve.\*\*

# PARTS & SPECIFICATIONS



	COMPONENT PARTS
1	SPOUT
2	WHITE FIT-ALL
3	FACE BUSHING
4	RUBBER WASHER
5	PEX RING
6	ALLEN KEY
7	PLUMBER'S TAPE



# TUB SPOUT INSTALLATION

1. If using 1/2" IPS in nose IPS should extend 4" from finished wall. Using appropriate sealant (plumber's tape included) screw spout onto pipe.
2. If using 1/2" IPS base connection IPS should extend 1/2" from wall. Place plastic face bushing (3) into white fit-all (2). Place completed parts (2) & (3) into nose of spout. Screw completed spout onto 1/2" IPS using appropriate sealant (plumber's tape included).
3. If using Copper/PEX connection Copper/PEX should extend 2"-3" from finished wall. Insert rubber washer (4) into rear of white fit-all (should seat against shoulder). Attach Copper/PEX ring (5) onto Copper/PEX. Back of adapter should sit inside finished glass 1/8". Secure with set screw. Screw finished spout onto pex ring (5) using appropriate sealant (plumber's tape included).

To learn more about JACLO's warranty, please visit **[jaclo.com](http://jaclo.com)**